

FRONT ELEVATION

SECTION : B - B

CERTIFICATE OF STRUCTURAL ENGINEER
 CERTIFY THAT THE STRUCTURAL DRAWING AND DESIGN OF BOTH THE FOUNDATION AND SUPERSTRUCTURE OF THE BUILDING BUILDINGS HAS BEEN MADE CONSIDERING THE SOIL TEST REPORT AS PER THE RULES AND REGULATIONS MADE UNDER THE ACT AND ALSO CONSIDERING ALL POSSIBLE LOADS, SEISMIC LOAD AND THE MOMENTS GENERATED BY THE PROPOSED STRUCTURE AS PER THE BUREAU OF INDIAN STANDARDS AND NATIONAL BULDING CODE OF INDIA AND CERTIFIED THAT IT IS SAFE AND STABLE IN ALL RESPECTS AND THESE PROVISIONS SHALL BE ADHERED TO DURING THE CONSTRUCTION.

SANJIV J. GUHA
 M.E. STRUCTURAL ENGINEER,
 P. C. E. No. 19/01 (K. M. C.)

SIGNATURE OF STRUCTURAL ENGINEER

CERTIFICATE OF ARCHITECT
 I CERTIFY THAT ALL THE ARCHITECTURAL DRAWINGS OF THE PROJECT AT PLOT NO. 552, 553, 554, 555, 556, 557, 558, 559, 560, 561, 562, 563, 564, 565, 566, 567, 568, 569, 570, 571, 572, 573, 574, 575, 576, 577, 578, 579, 580, 581, 582, 583, 584, 585, 586, 587, 588, 589, 590, 591, 592, 593, 594, 595, 596, 597, 598, 599, 600, 601, 602, 603, 604, 605, 606, 607, 608, 609, 610, 611, 612, 613, 614, 615, 616, 617, 618, 619, 620, 621, 622, 623, 624, 625, 626, 627, 628, 629, 630, 631, 632, 633, 634, 635, 636, 637, 638, 639, 640, 641, 642, 643, 644, 645, 646, 647, 648, 649, 650, 651, 652, 653, 654, 655, 656, 657, 658, 659, 660, 661, 662, 663, 664, 665, 666, 667, 668, 669, 670, 671, 672, 673, 674, 675, 676, 677, 678, 679, 680, 681, 682, 683, 684, 685, 686, 687, 688, 689, 690, 691, 692, 693, 694, 695, 696, 697, 698, 699, 700, 701, 702, 703, 704, 705, 706, 707, 708, 709, 710, 711, 712, 713, 714, 715, 716, 717, 718, 719, 720, 721, 722, 723, 724, 725, 726, 727, 728, 729, 730, 731, 732, 733, 734, 735, 736, 737, 738, 739, 740, 741, 742, 743, 744, 745, 746, 747, 748, 749, 750, 751, 752, 753, 754, 755, 756, 757, 758, 759, 760, 761, 762, 763, 764, 765, 766, 767, 768, 769, 770, 771, 772, 773, 774, 775, 776, 777, 778, 779, 780, 781, 782, 783, 784, 785, 786, 787, 788, 789, 790, 791, 792, 793, 794, 795, 796, 797, 798, 799, 800, 801, 802, 803, 804, 805, 806, 807, 808, 809, 810, 811, 812, 813, 814, 815, 816, 817, 818, 819, 820, 821, 822, 823, 824, 825, 826, 827, 828, 829, 830, 831, 832, 833, 834, 835, 836, 837, 838, 839, 840, 841, 842, 843, 844, 845, 846, 847, 848, 849, 850, 851, 852, 853, 854, 855, 856, 857, 858, 859, 860, 861, 862, 863, 864, 865, 866, 867, 868, 869, 870, 871, 872, 873, 874, 875, 876, 877, 878, 879, 880, 881, 882, 883, 884, 885, 886, 887, 888, 889, 890, 891, 892, 893, 894, 895, 896, 897, 898, 899, 900, 901, 902, 903, 904, 905, 906, 907, 908, 909, 910, 911, 912, 913, 914, 915, 916, 917, 918, 919, 920, 921, 922, 923, 924, 925, 926, 927, 928, 929, 930, 931, 932, 933, 934, 935, 936, 937, 938, 939, 940, 941, 942, 943, 944, 945, 946, 947, 948, 949, 950, 951, 952, 953, 954, 955, 956, 957, 958, 959, 960, 961, 962, 963, 964, 965, 966, 967, 968, 969, 970, 971, 972, 973, 974, 975, 976, 977, 978, 979, 980, 981, 982, 983, 984, 985, 986, 987, 988, 989, 990, 991, 992, 993, 994, 995, 996, 997, 998, 999, 1000.

SIGNATURE OF ARCHITECT
 BARNITA CHATTOPADHYAY
 Regd. Architect
 New Town Kolkata Development Authority
 Enrolment No. TP/AN/ND/150203
 A3A

CERTIFICATE OF GEO-TECHNICAL ENGINEER
 IT IS CERTIFIED THAT THE COMPREHENSIVE GEO-TECHNICAL REPORT ON SOIL INVESTIGATION HAS BEEN PREPARED BY ME FOR DESIGN AND CALCULATION OF THE FOUNDATION BY ANALYSING THE SOIL SAMPLES FOR ESTIMATING THE BEARING CAPACITY OF THE SOIL ON WHICH FOUNDATION OF THE STRUCTURE WILL BE CONSTRUCTED. I SHALL ALSO CHECK THE NATURE OF THE SOIL AFTER EXCAVATION AT SITE SO THAT FOUNDATION IS EXTENDED UP TO THE APPROPRIATE DEPTH THAT HAS BEEN PROPOSED IN THE GEO-TECHNICAL REPORT.

SUBIR RANJAN SARKAR
 B.Arch (C.A.), M.C.P. (I.T.), M.P.E.
 Reg. No. 22293
 ARCHITECT NO. 10924

SIGNATURE OF ARCHITECT

NAME OF OWNERS
NAME OF THE COMPANY

1. BIKH SALES PRIVATE LIMITED	74. WACKENZI BARTER PRIVATE LIMITED
2. ADHARWELLA REAL ESTATE PRIVATE LIMITED	75. WACKENZI BARTER PRIVATE LIMITED
3. ADHARWELLA REAL ESTATE PRIVATE LIMITED	76. WACKENZI BARTER PRIVATE LIMITED
4. ADHARWELLA REAL ESTATE PRIVATE LIMITED	77. WACKENZI BARTER PRIVATE LIMITED
5. ADHARWELLA REAL ESTATE PRIVATE LIMITED	78. WACKENZI BARTER PRIVATE LIMITED
6. ADHARWELLA REAL ESTATE PRIVATE LIMITED	79. WACKENZI BARTER PRIVATE LIMITED
7. ADHARWELLA REAL ESTATE PRIVATE LIMITED	80. WACKENZI BARTER PRIVATE LIMITED
8. ADHARWELLA REAL ESTATE PRIVATE LIMITED	81. WACKENZI BARTER PRIVATE LIMITED
9. ADHARWELLA REAL ESTATE PRIVATE LIMITED	82. WACKENZI BARTER PRIVATE LIMITED
10. ADHARWELLA REAL ESTATE PRIVATE LIMITED	83. WACKENZI BARTER PRIVATE LIMITED
11. ADHARWELLA REAL ESTATE PRIVATE LIMITED	84. WACKENZI BARTER PRIVATE LIMITED
12. ADHARWELLA REAL ESTATE PRIVATE LIMITED	85. WACKENZI BARTER PRIVATE LIMITED
13. ADHARWELLA REAL ESTATE PRIVATE LIMITED	86. WACKENZI BARTER PRIVATE LIMITED
14. ADHARWELLA REAL ESTATE PRIVATE LIMITED	87. WACKENZI BARTER PRIVATE LIMITED
15. ADHARWELLA REAL ESTATE PRIVATE LIMITED	88. WACKENZI BARTER PRIVATE LIMITED
16. ADHARWELLA REAL ESTATE PRIVATE LIMITED	89. WACKENZI BARTER PRIVATE LIMITED
17. ADHARWELLA REAL ESTATE PRIVATE LIMITED	90. WACKENZI BARTER PRIVATE LIMITED
18. ADHARWELLA REAL ESTATE PRIVATE LIMITED	91. WACKENZI BARTER PRIVATE LIMITED
19. ADHARWELLA REAL ESTATE PRIVATE LIMITED	92. WACKENZI BARTER PRIVATE LIMITED
20. ADHARWELLA REAL ESTATE PRIVATE LIMITED	93. WACKENZI BARTER PRIVATE LIMITED
21. ADHARWELLA REAL ESTATE PRIVATE LIMITED	94. WACKENZI BARTER PRIVATE LIMITED
22. ADHARWELLA REAL ESTATE PRIVATE LIMITED	95. WACKENZI BARTER PRIVATE LIMITED
23. ADHARWELLA REAL ESTATE PRIVATE LIMITED	96. WACKENZI BARTER PRIVATE LIMITED
24. ADHARWELLA REAL ESTATE PRIVATE LIMITED	97. WACKENZI BARTER PRIVATE LIMITED
25. ADHARWELLA REAL ESTATE PRIVATE LIMITED	98. WACKENZI BARTER PRIVATE LIMITED
26. ADHARWELLA REAL ESTATE PRIVATE LIMITED	99. WACKENZI BARTER PRIVATE LIMITED
27. ADHARWELLA REAL ESTATE PRIVATE LIMITED	100. WACKENZI BARTER PRIVATE LIMITED
28. ADHARWELLA REAL ESTATE PRIVATE LIMITED	101. WACKENZI BARTER PRIVATE LIMITED
29. ADHARWELLA REAL ESTATE PRIVATE LIMITED	102. WACKENZI BARTER PRIVATE LIMITED
30. ADHARWELLA REAL ESTATE PRIVATE LIMITED	103. WACKENZI BARTER PRIVATE LIMITED
31. ADHARWELLA REAL ESTATE PRIVATE LIMITED	104. WACKENZI BARTER PRIVATE LIMITED
32. ADHARWELLA REAL ESTATE PRIVATE LIMITED	105. WACKENZI BARTER PRIVATE LIMITED
33. ADHARWELLA REAL ESTATE PRIVATE LIMITED	106. WACKENZI BARTER PRIVATE LIMITED
34. ADHARWELLA REAL ESTATE PRIVATE LIMITED	107. WACKENZI BARTER PRIVATE LIMITED
35. ADHARWELLA REAL ESTATE PRIVATE LIMITED	108. WACKENZI BARTER PRIVATE LIMITED
36. ADHARWELLA REAL ESTATE PRIVATE LIMITED	109. WACKENZI BARTER PRIVATE LIMITED
37. ADHARWELLA REAL ESTATE PRIVATE LIMITED	110. WACKENZI BARTER PRIVATE LIMITED
38. ADHARWELLA REAL ESTATE PRIVATE LIMITED	111. WACKENZI BARTER PRIVATE LIMITED
39. ADHARWELLA REAL ESTATE PRIVATE LIMITED	112. WACKENZI BARTER PRIVATE LIMITED
40. ADHARWELLA REAL ESTATE PRIVATE LIMITED	113. WACKENZI BARTER PRIVATE LIMITED
41. ADHARWELLA REAL ESTATE PRIVATE LIMITED	114. WACKENZI BARTER PRIVATE LIMITED
42. ADHARWELLA REAL ESTATE PRIVATE LIMITED	115. WACKENZI BARTER PRIVATE LIMITED
43. ADHARWELLA REAL ESTATE PRIVATE LIMITED	116. WACKENZI BARTER PRIVATE LIMITED
44. ADHARWELLA REAL ESTATE PRIVATE LIMITED	117. WACKENZI BARTER PRIVATE LIMITED
45. ADHARWELLA REAL ESTATE PRIVATE LIMITED	118. WACKENZI BARTER PRIVATE LIMITED
46. ADHARWELLA REAL ESTATE PRIVATE LIMITED	119. WACKENZI BARTER PRIVATE LIMITED
47. ADHARWELLA REAL ESTATE PRIVATE LIMITED	120. WACKENZI BARTER PRIVATE LIMITED
48. ADHARWELLA REAL ESTATE PRIVATE LIMITED	121. WACKENZI BARTER PRIVATE LIMITED
49. ADHARWELLA REAL ESTATE PRIVATE LIMITED	122. WACKENZI BARTER PRIVATE LIMITED
50. ADHARWELLA REAL ESTATE PRIVATE LIMITED	123. WACKENZI BARTER PRIVATE LIMITED
51. ADHARWELLA REAL ESTATE PRIVATE LIMITED	124. WACKENZI BARTER PRIVATE LIMITED
52. ADHARWELLA REAL ESTATE PRIVATE LIMITED	125. WACKENZI BARTER PRIVATE LIMITED
53. ADHARWELLA REAL ESTATE PRIVATE LIMITED	126. WACKENZI BARTER PRIVATE LIMITED
54. ADHARWELLA REAL ESTATE PRIVATE LIMITED	127. WACKENZI BARTER PRIVATE LIMITED
55. ADHARWELLA REAL ESTATE PRIVATE LIMITED	128. WACKENZI BARTER PRIVATE LIMITED
56. ADHARWELLA REAL ESTATE PRIVATE LIMITED	129. WACKENZI BARTER PRIVATE LIMITED
57. ADHARWELLA REAL ESTATE PRIVATE LIMITED	130. WACKENZI BARTER PRIVATE LIMITED
58. ADHARWELLA REAL ESTATE PRIVATE LIMITED	131. WACKENZI BARTER PRIVATE LIMITED
59. ADHARWELLA REAL ESTATE PRIVATE LIMITED	132. WACKENZI BARTER PRIVATE LIMITED
60. ADHARWELLA REAL ESTATE PRIVATE LIMITED	133. WACKENZI BARTER PRIVATE LIMITED
61. ADHARWELLA REAL ESTATE PRIVATE LIMITED	134. WACKENZI BARTER PRIVATE LIMITED
62. ADHARWELLA REAL ESTATE PRIVATE LIMITED	135. WACKENZI BARTER PRIVATE LIMITED
63. ADHARWELLA REAL ESTATE PRIVATE LIMITED	136. WACKENZI BARTER PRIVATE LIMITED
64. ADHARWELLA REAL ESTATE PRIVATE LIMITED	137. WACKENZI BARTER PRIVATE LIMITED
65. ADHARWELLA REAL ESTATE PRIVATE LIMITED	138. WACKENZI BARTER PRIVATE LIMITED
66. ADHARWELLA REAL ESTATE PRIVATE LIMITED	139. WACKENZI BARTER PRIVATE LIMITED
67. ADHARWELLA REAL ESTATE PRIVATE LIMITED	140. WACKENZI BARTER PRIVATE LIMITED
68. ADHARWELLA REAL ESTATE PRIVATE LIMITED	141. WACKENZI BARTER PRIVATE LIMITED
69. ADHARWELLA REAL ESTATE PRIVATE LIMITED	142. WACKENZI BARTER PRIVATE LIMITED
70. ADHARWELLA REAL ESTATE PRIVATE LIMITED	143. WACKENZI BARTER PRIVATE LIMITED
71. ADHARWELLA REAL ESTATE PRIVATE LIMITED	144. WACKENZI BARTER PRIVATE LIMITED
72. ADHARWELLA REAL ESTATE PRIVATE LIMITED	145. WACKENZI BARTER PRIVATE LIMITED
73. ADHARWELLA REAL ESTATE PRIVATE LIMITED	146. WACKENZI BARTER PRIVATE LIMITED
74. ADHARWELLA REAL ESTATE PRIVATE LIMITED	147. WACKENZI BARTER PRIVATE LIMITED

SUBIR RANJAN SARKAR
 B.Arch (C.A.), M.C.P. (I.T.), M.P.E.
 Reg. No. 22293
 ARCHITECT NO. 10924

SIGNATURE OF ARCHITECT

SUBIR RANJAN SARKAR
 B.Arch (C.A.), M.C.P. (I.T.), M.P.E.
 Reg. No. 22293
 ARCHITECT NO. 10924

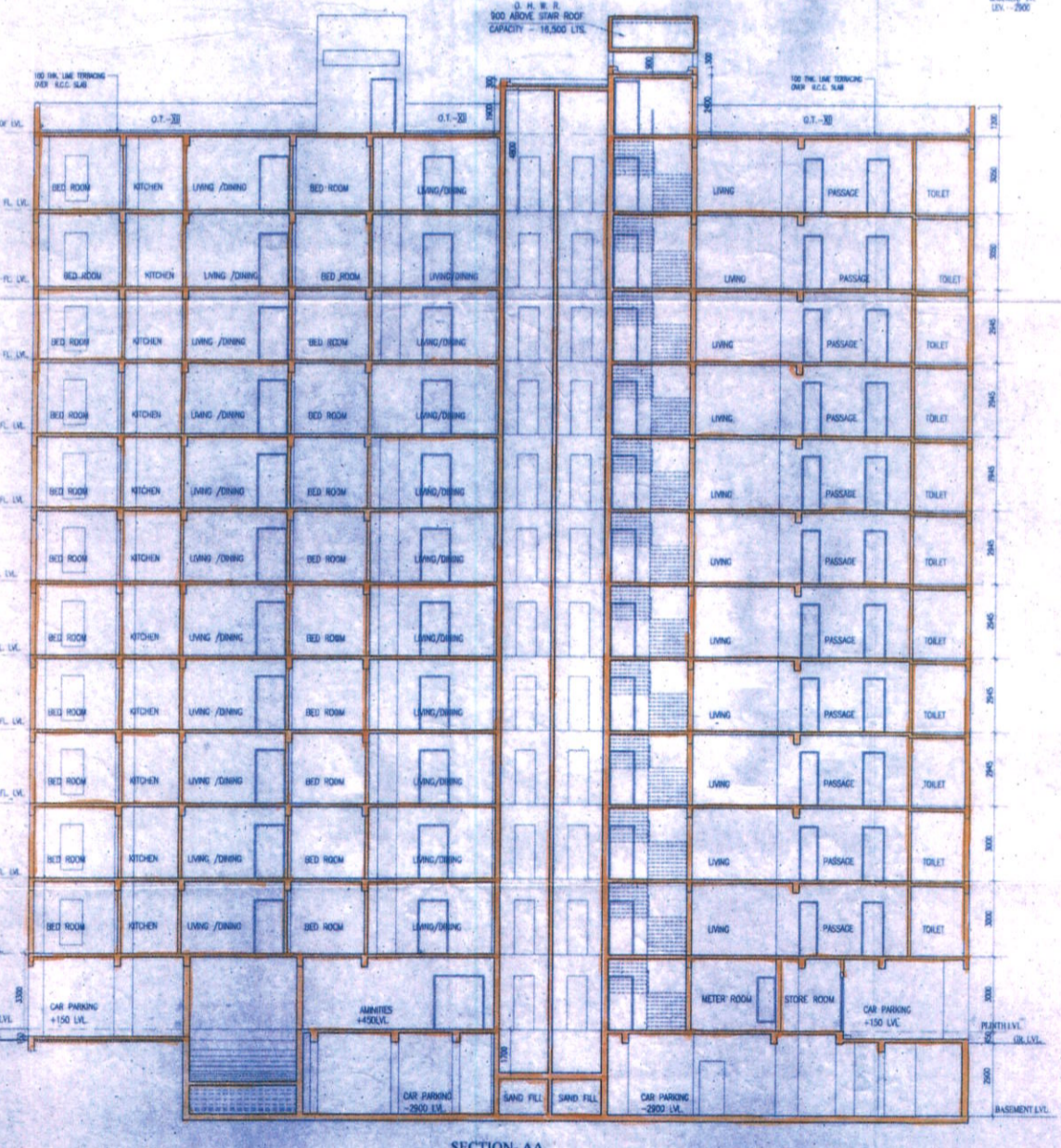
SIGNATURE OF ARCHITECT

SUBIR RANJAN SARKAR
 B.Arch (C.A.), M.C.P. (I.T.), M.P.E.
 Reg. No. 22293
 ARCHITECT NO. 10924

SIGNATURE OF ARCHITECT

ARCHITECTS

AGRAWAL & AGRAWAL	
SANJIV J. GUHA	KALITA
SCALE	DATE
1:100	08.06.15
SHEET	DEALT
09-CP-44	NITESH ANKAN
CHECKED	SURVA



SECTION-AA

SIGNATURE OF OWNER

09/11
BL-1

ARCHITECT: BARNIKA CHATTERJEE CIVIL/STRUCTURAL ENGINEER SANJIB GUHA GEOTECHNICAL ENGINEER SHYAMAL KUMAR MITRA JOINT VENTURE/JOINT DESIGNER: BARNIKA CHATTERJEE STRUCTURAL ENGINEER SANJIB GUHA	Sanction No: NKA/DA/10/0023 Sanction No: NKA/DA/10/0020 Sanction No: NKA/DA/10/0010 Sanction No: NKA/DA/10/0022 Sanction No: NKA/DA/10/0023
---	--

STRUCTURAL DRAWINGS, STRUCTURAL
DESIGN CALCULATIONS & SOIL TEST
REPORT ARE NOT CHECKED AND KEPT
FOR RECORDS ONLY.

NEW TOWN KOLKATA DEVELOPMENT AUTHORITY
No Objection Certificate for
Sanction of Building Plan for
Residential Purpose
Memo No. 6876 (22)/NKA/DA/OPS-04 (05)/2014
Date: 02 Nov 2015
Building Particulars: R+G+13 Storied Residential Building of Dug
No. 620 to 625, 627, 628, 615 (CP), 629 (CP), 630 (CP), 632 (CP),
633 to 649, 650 (CP), 651 (CP), 652 to 657, 658/658 (CP) &
634/734, Mouza - Rajbari, JL No. 12, 24 Phs (N).
NOTE: The proposal is recommended for approval
subject to submission of environmental clearance.

Sanchitina S. Das
22-11-15
Executive Officer
Rajbari Panchayat Samity

Jayanti Majumder
Assistant Architect
New Town Kolkata Development Authority
S. Chatterjee
Chief Architect
New Town Kolkata Development Authority